

TOP UP VIA CASH

Visit our physical store or partner stores to top up with cash!



Iakaba Money Exchange Pte Ltd

1 Maritime Square #01-04
HarbourFront Centre, 099253
Opening Hours: 10AM-10PM (Mon - Fri)



iApps Pte Ltd

Fusionopolis Symbiosis,
3 Fusionopolis Way #13-25/24, 138633
Opening hours: 9am-6pm (Mon-Fri)



Shining Money Exchange Pte Ltd

61 Marina Coastal Dr, #02-02
Marina Bay Cruise Ctr, 018947
(Call 6463 2373 for opening hours)



Ariza Money Exchange

1 Maritime Square, #01-12
HarbourFront Centre, 099253
Opening Hours: 10AM-10PM (Mon - Fri)



Anua Money Exchange

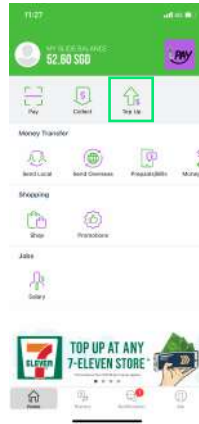
1 Maritime Square #01-61
Harbourfront Centre, 099253
Opening Hours: 10AM-10PM (Mon-Fri)



Shenton Money Exchange

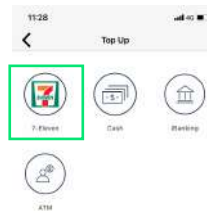
460 Alexandra Road
#01-18A, 119163
Opening Hours: 10AM-10PM (Mon- Fri)

TOP UP VIA 7-ELEVEN



1

Click "Top Up"



2

Select 7-Eleven

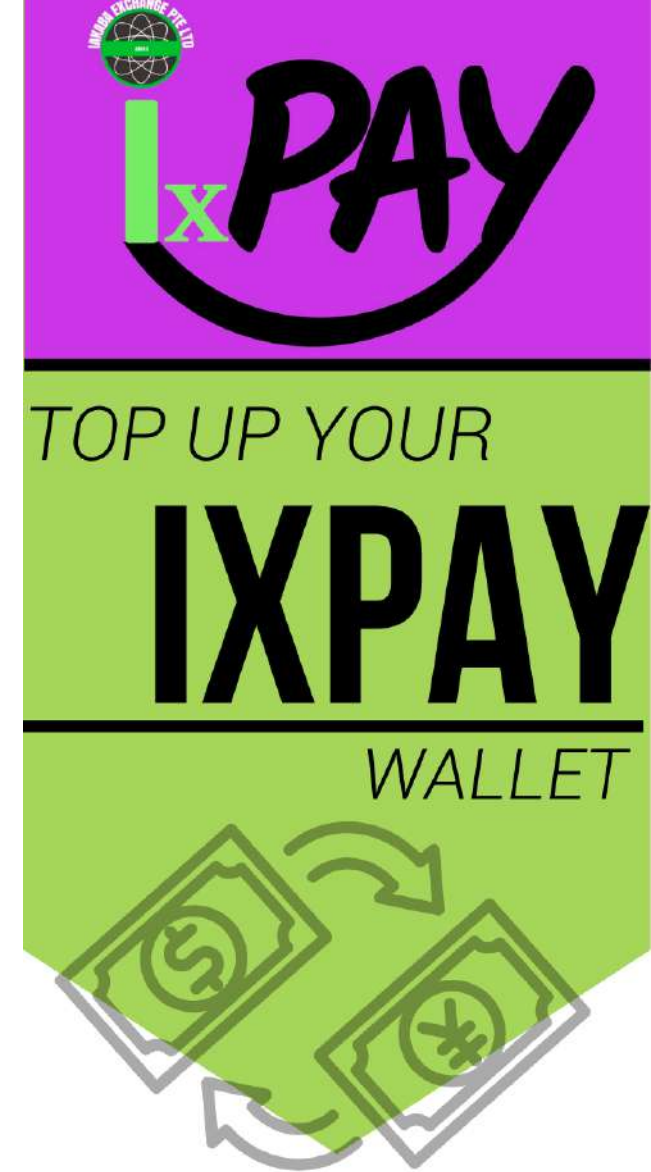


3

Show the QR Code to the 7-Eleven staff to top up your SME wallet or click "Find a 7-Eleven store" button to find a store near you.

4

Check your SLIDE wallet after the transaction and you will see the amount credited into your account.



7-ELEVEN STORES



IBANKING



ATM TRANSFER

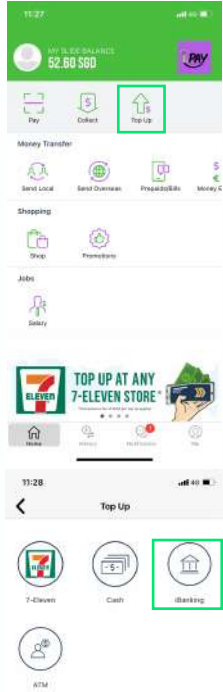


CASH @
PHYSICAL STORES

TOP UP VIA IBANKING

Use your banking apps to top up your IAKABA app smoothly!

1) CIMB Clicks



1
Click "Top Up"

2
Select "iBanking" and
Select "CIMB Clicks"

3
Follow through the
steps provided on the screen
and continue on your CIMB app.

2) Other Bank Apps



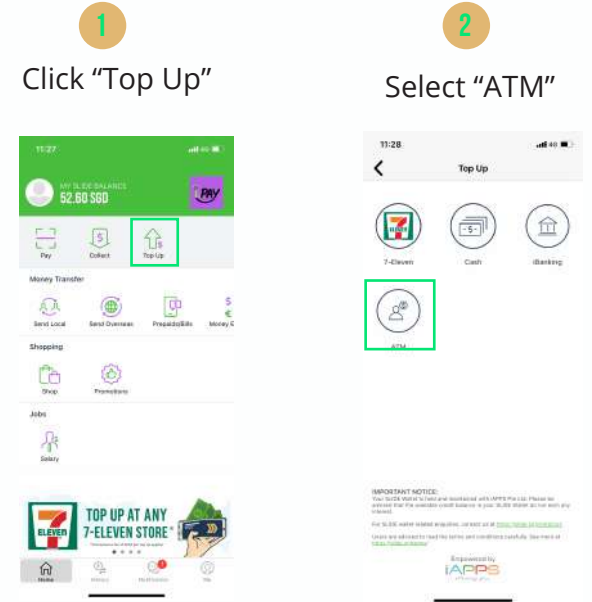
1
Click "Top Up"

2
Select "iBanking" and
Select "Other Banks"

3
Follow through the
steps provided on the screen
and continue on your Banking app.

TOP UP VIA ATM TRANSFER

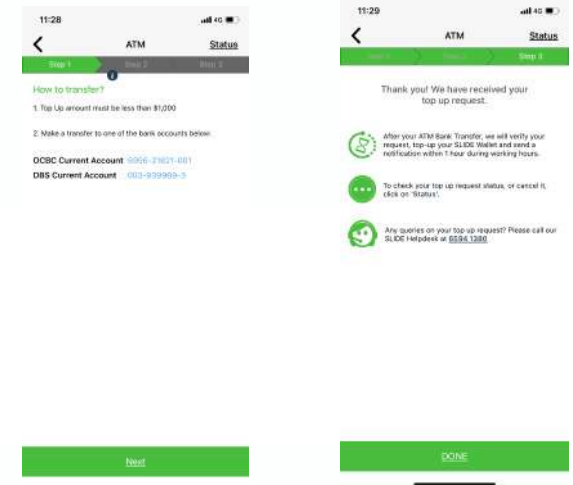
Transfer money from your bank accounts with the IAKABA app easily!



1
Click "Top Up"

2
Select "ATM"

3
Follow through the steps and fill in the form.
Once you're done, click on "Submit Request"



4
Once you have submitted, you can
click on status to check your request.